

STUDIO**WILLIAM**
CUTLERY

WHO WE ARE

Studio William is an English cutlery company led by founder and award-winning industrial designer William Welch with a mission to create pioneering products that enhance the dining experience. To many who love dining, Studio William owns a unique space in the world of cutlery.

Our high-quality cutlery is crafted using a combination of industrial processes and hand finishing. We're cutlery obsessives and possibly described as geeky, it is simple...
we love what we do.



[WATCH NOW](#)

OUR DESIGN STORY

William Welch is the contemporary cutler with impeccable design credentials, design heritage and an obsession for cutlery and nature. At Studio William, we are cutlery geeks, designing beautiful and elegant sensory forms. Our joy is enhancing the dining experience from texture, to sight and touch to deliver a memorable interaction with food. We live and breathe nature and it inspires our cutlery designs with a particular focus on the character and beauty of trees.



MEET WILLIAM



HOW CUTLERY IS MADE

INTERNATIONALLY ACCLAIMED BRAND

Today we are thrilled to have won more international design awards than any other cutlery company on the planet. Over the past two decades, we have created numerous award-winning cutlery ranges, which have been recognised across the design world. Studio William cutlery is in permanent museum collections around the world including the Victoria & Albert Museum London, The Design Museum London, the MAK Design Museum in Vienna, Roddot Design Museum Essen Germany, and Chicago Athenaeum Museum of Architecture and Design.



MUSEUMS



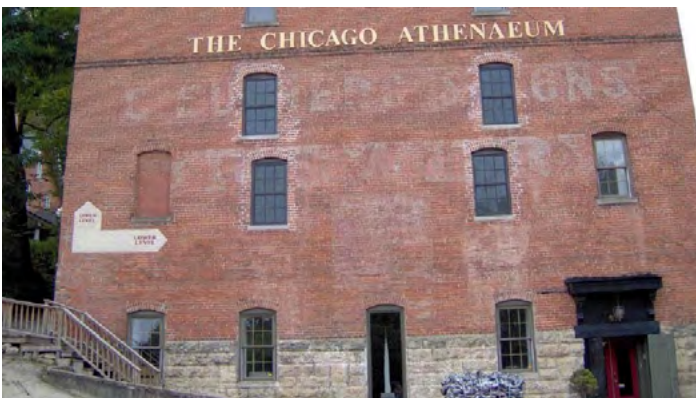
RED-DOT DESIGN MUSEUM GERMANY

Studio William's Award winning ranges Mulberry, Olive, Balsa, Karri and Mahogany, are stored as outstanding examples of contemporary British cutlery design.



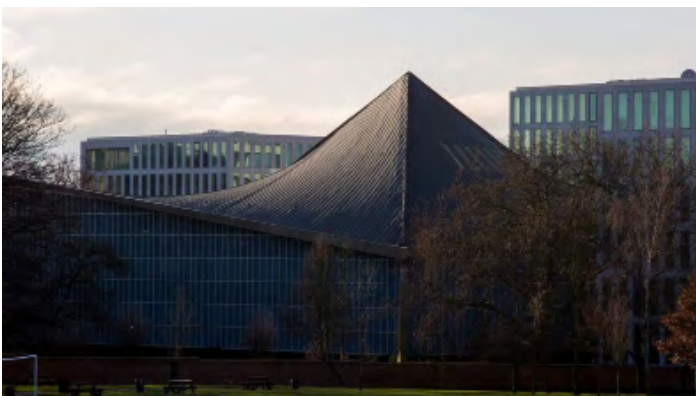
VICTORIA AND ALBERT MUSEUM LONDON

The V&A, holds Studio William cutlery, as an example of contemporary British cutlery design, in their permanent collection.



THE CHICAGO ATHENAEUM MUSEUM OF DESIGN AND ARCHITECTURE

The Chicago Athenaeum, has awarded Studio William patterns, over five awards for Good Design. As part of the awards process, they keep samples of every product that has won a Good Design Award, in their permanent collection.



THE NEW LONDON DESIGN MUSEUM

Studio William's Sensory Textured Spoons, are displayed as part of an exhibition, at the London Design Museum's new location in Kensington (the old Commonwealth building).

OKINA SATIN

Satin Finish & Heavy Weight

Okina is the physical embodiment of Yin & Yang, light and dark. Two contrasting knife designs, form part of one contrasting collaboration; the Orient inspired curvaceous knives and the European minimal straight knives. Okina allows users to change the aesthetic of the table setting through the switching of different knives, whilst using the same forks and spoons. The playfulness and adaptability we love, use the straight knife for lunch service, and the curved knives for evening service.



THE CHICAGO
ATHENAEUM
MUSEUM OF
ARCHITECTURE
AND DESIGN



product
design award



SHOWING USE OF STRAIGHT KNIFE



SHOWING USE OF CURVED KNIFE



COMBINED KNIVES





JAPANESE SPS MELAMINE CHOPSTICK BLACK 250MM - JPN 880091

EXTRA PIECES





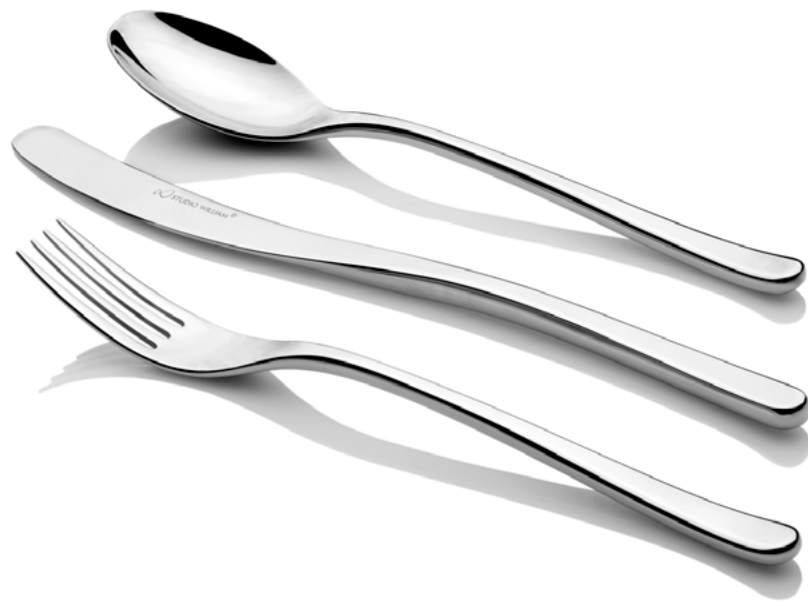
WATCH OKINA VIDEO



AROLLA MIRROR

Mirror Finish & Heavy Weight

The Arolla tree is a form of pine tree widely found across central Europe, most commonly in the Alps and Carpathian mountains. Arolla has weight and substance, but is perfectly balanced. It's organic and asymmetric lines have been designed to be ergonomically and aesthetically appealing. The form of the knife blade compliments the clear lines of the spoon and forks. The design leads itself to fine dining and signature dining locations.





SERVING SPOON 248MM - ALM880009



SERVING FORK 248MM -ALM880011



COFFEE SPOON 116MM - ALM880013



ESPRESSO SPOON 106MM - ALM880014



STEAK KNIFE 245MM - ALM880015



SMALL BOWL DESSERT SPOON 188MM - ALM880018



BOUILLON SPOON 188MM - ALM880034



FISH FORK 188MM - ALM880023



FISH KNIFE 225MM - ALM880022



BUTTER KNIFE 172MM - ALM880019



PASTRY FORK 160MM - ALM880055

WATCH AROLLA VIDEO



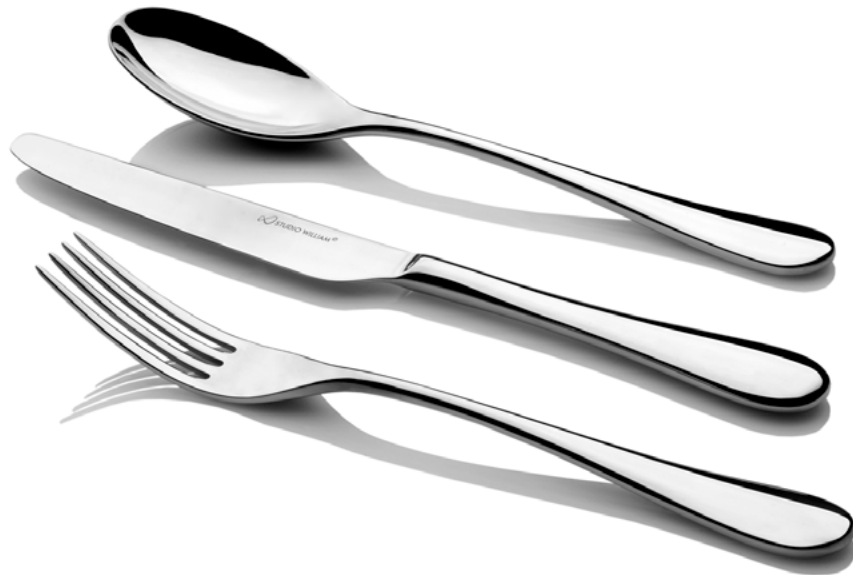
MULBERRY MIRROR

Mirror Finish & Heavy Weight

The Mulberry tree is generally a short-lived tree with a lifespan similar to that of humans, however there are some known to be over 250 years old. Mulberry can be found at No.10 Downing Street and has received international design recognition via a coveted Reddot Design Award. A sophisticated, timeless design and our global bestselling pattern with the most extensive range. Perfect for both contemporary and traditional table settings.



reddot design award



SIDE FORK 188MM – MUM8800004



TABLE FORK 210MM – MUM8800002



TABLE KNIFE 240MM – MUM8800001



SIDE KNIFE 212MM – MUM8800005



SOUP SPOON 210MM – MUM8800003



DESSERT SPOON 188MM – MUM8800006



ENGLISH TEA SPOON 132MM – MUM8800007



SERVING SPOON 248MM - MUM880009



SERVING FORK 248MM - MUM880011



COFFEE SPOON 116MM - MUM880013



ESPRESSO SPOON 106MM - MUM880014



STEAK KNIFE 245MM - MUM880015



PIE SERVER 248MM - MUM880016



SAUCE LADLE 174MM - MUM880017



FRENCH SAUCE SPOON 188MM - MUM880029



CHOP STICKS - 240MM MUM880031



BOUILLON SPOON 188MM - MUM880034



LONG MOCHA SPOON 220MM - MUM880036



BUFFET SPORK 185MM - MUM880048



LOBSTER PICK 200MM - MUM880050



PASTRY FORK 160MM - MUM880055



ICE CREAM SPOON 160MM - MUM880064





SEAFOOD/TASTER FORK 150MM - MUM8800045



MINI TASTER SPOON 150MM - MUM8800038



TASTER TWEEZERS 188MM - MUM8800049



TASTER SPORK 135MM - MUM8800046



MINI SAUCE LADLE 126MM - MUM8800037



LARGE SOUP LADLE 320MM - MUM8800030



CAKE KNIFE 325MM - MUM8800033



RICE SERVING SPOON 248MM - MUM8800089



SMALL BOWL DESSERT SPOON 188MM - MUM8800018



BUTTER KNIFE 172MM - MUM8800019



CHEESE KNIFE 216MM - MUM8800020



FISH FORK 188MM - MUM8800023



FISH KNIFE 225MM - MUM8800022



APPETIZER/ TAPAS SPOON 150MM - MUM8800027



APPETIZER/ TAPAS FORK 150MM - MUM8800026



MINI BOUILLON SPOON 158MM - MUM8800065



WATCH MULBERRY VIDEO



MULBERRY SATIN

Satin Finish & Heavy Weight

The newest addition to the Mulberry range brings a contemporary satin finish to our bestselling and red dot design award winning pattern. Mulberry satin features mirrored knife blades for a sophisticated and timeless look. Perfect for both contemporary and traditional table settings. This range is timeless and elegant and well suited to All day dining and banqueting venues.

CONTACT SALES TEAM FOR STOCK AVAILABILITY



reddot design award



SIDE FORK 188MM – MUS8800004



TABLE FORK 210MM – MUS8800002



TABLE KNIFE 240MM – MUS8800001



SIDE KNIFE 212MM – MUS8800005



SOUP SPOON 210MM – MUS8800003



DESSERT SPOON 188MM – MUS8800006



ENGLISH TEA SPOON 132MM – MUS8800007



SERVING SPOON 248MM - MUS880009



SERVING FORK 248MM - MUS880011



COFFEE SPOON 116MM - MUS880013



ESPRESSO SPOON 106MM - MUS880014



STEAK KNIFE 245MM - MUS880015



BUTTER KNIFE 172MM - MUS880019



BOUILLON SPOON 188MM - MUM880034

WATCH MULBERRY VIDEO



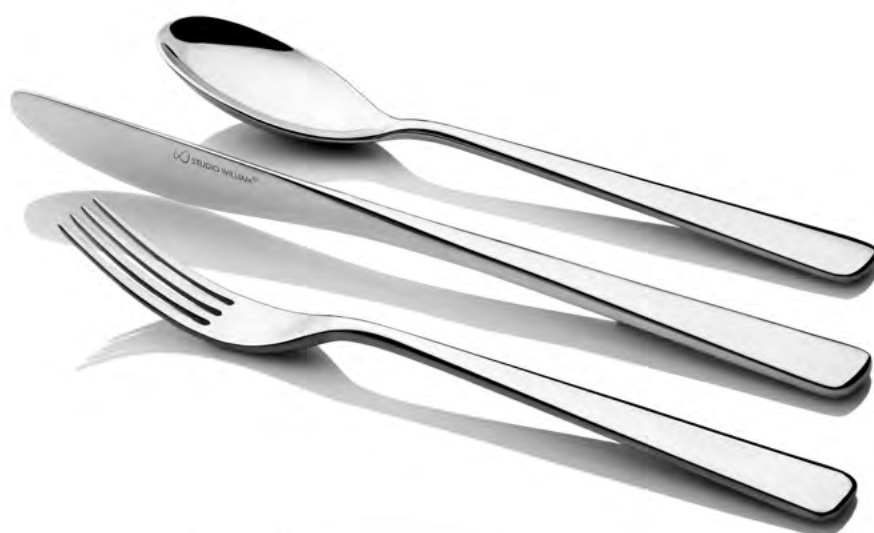
KARRI MIRROR

Mirror Finish & Heavy Weight

The Karri tree is a type of eucalyptus tree found in Western Australia and is considered sacred by the Aborigines. Karri's minimal straight appearance is both confident and innovative. The heavy gauged steel of the forks and spoons give beautiful weight and balance. The standing-up knife blade is sleek, with no traditional bolster from handle into blade. A gorgeous seamless transition from handle in blade. It is very comfortable to hold in the hand and use.



THE CHICAGO
ATHENAEUM
MUSEUM OF
ARCHITECTURE
AND DESIGN



SIDE FORK 188MM - KAM8800004



TABLE FORK 210MM - KAM8800002



TABLE KNIFE 240MM - KAM8800001



SIDE KNIFE 212MM - KAM8800005



SOUP SPOON 210MM - KAM8800003



DESSERT SPOON 188MM - KAM8800006



ENGLISH TEA SPOON 132MM - KAM8800007



APPETIZER FORK 150MM - KAM8800026



APPETIZER/TAPAS/BUTTER KNIFE 172MM - KAM8800019



APPETIZER SPOON 150MM - KAM8800027



BOUILLON SOUP SPOON SMALL 188MM - KAM8800034



LONG MOCHA SPOON 220MM KAM8800036



MINI TASTER SPOON 150MM - KAM8800038



SEAFOOD/TASTER FORK 150MM - KAM8800045



SERVING SPOON 248MM - KAM8800009



SERVING FORK - 248MM KAM8800011



COFFEE SPOON 116MM - KAM8800013



ESPRESSO SPOON 106MM - KAM8800014



STEAK KNIFE 245MM - KAM8800015



TASTER SPORK 135MM - KAM880046



SMALL BOWL DESSERT SPOON 188MM - KAM880018



MENU TASTER SPOON 188MM - KAM880018



CHEESE KNIFE 225MM - KAM880020



SMALL PASTRY FORK 160MM - KAM880055



FISH FORK 188MM - KAM880023



FISH KNIFE 225MM - KAM880022

WATCH KARRI VIDEO





KUMQUAT MIRROR

Mirror Finish & Heavy Weight

Kumquats are native to the Asia-Pacific region and the Cantonese use this fruit in medicine and it can also be used as a popular alternative to an Olive in a Martini. Elegant and poised, Kumquat knives have been specially created to blend into our Karri pattern, for those who wish to have an alternative to this pattern's stand-up knife. The form has simplicity and sophistication. The clean straight lines are balanced with soft, oval sections of the handle.



THE CHICAGO
ATHENAEUM
MUSEUM OF
ARCHITECTURE
AND DESIGN



SIDE FORK 188MM - KAM8800004



TABLE FORK 210MM - KAM8800002



TABLE KNIFE 240MM - QKM8800001



SIDE KNIFE 212MM - QKM8800005



SOUP SPOON 210MM - KAM8800003



DESSERT SPOON 188MM - KAM8800006



ENGLISH TEA SPOON 132MM - KAM8800007



APPETIZER FORK 150MM - KAM8800026



APPETIZER/TAPAS/BUTTER KNIFE 172MM - KAM8800019



APPETIZER SPOON 150MM - KAM8800027



BOUILLON SOUP SPOON SMALL 188MM - KAM8800034



LONG MOCHA SPOON 220MM - KAM8800036



MINI TASTER SPOON 150MM - KAM8800038



SEAFOOD/TASTER FORK 150MM - KAM8800045



SERVING SPOON 248MM - KAM8800009



SERVING FORK 248MM - KAM8800011



STEAK KNIFE 245MM - KAM8800015



SMALL BOWL DESSERT SPOON 188MM - KAM8800018



COFFEE SPOON 116MM - KAM8800013



ESPRESSO SPOON 106MM - KAM8800014





TASTER SPORK 135MM - KAM880046



SMALL PASTRY FORK 160MM - KAM880055



MENU TASTER SPOON 188MM - KAM880018



FISH FORK 188MM - KAM880023



FISH KNIFE 225MM - KAM880022

WATCH KUMQUAT VIDEO





ROYAL OAK MIRROR

Mirror Finish & Heavy Weight

Hidden beneath the handles is a reference to the historical “King’s Pattern”. This can be placed on display on the table, or concealed like the King himself. The Royal Oak is the name given to the oak tree in which Charles II of England hid to escape the Roundheads during The Battle of Worcester in 1651. An ancient oak, thought to be from an acorn from the original, still stands at Boscobel in Shropshire.



SIDE FORK 188MM - RYM880004



TABLE FORK 210MM - RYM880002



TABLE KNIFE 240MM - RYM880001



SIDE KNIFE 212MM - RYM880005



SOUP SPOON 210MM - RYM880003



DESSERT SPOON 188MM - RYM880006



ENGLISH TEA SPOON 132MM - RYM880007



SERVING SPOON 248MM - RYM8800009



SERVING FORK 248MM - RYM8800011



COFFEE SPOON 116MM - RYM8800013



ESPRESSO SPOON 106MM - RYM8800014



STEAK KNIFE 245MM - RYM8800015



APPETIZER FORK 150MM - RYM8800026



BUTTER KNIFE 172MM - RYM8800019



APPETIZER SPOON 150MM - RYM8800027



SMALL BOWL DESSERT SPOON 188MM - RYM8800018



FISH FORK 188MM - RYM8800023



FISH KNIFE 225MM - RYM8800022



PIE SERVER 248MM - RYM8800016



SAUCE LADLE 174MM - RYM8800017



BOUILLON SPOON 188MM - RYM8800034



PASTRY FORK 160MM - RYM8800055



WATCH ROYAL OAK VIDEO



ROYAL OAK GOLDPLATE

Mirror Finish & Heavy Weight

Royal Oak Gold is the epitome of elegance. Hidden beneath the handles is a reference to the historical “King’s Pattern”. This detail is plated with 24 carat gold. The cutlery can be placed on the table as normal, or have a few pieces (or all) turned over in the ‘continental style’ to show a subtle opulence.



SIDE FORK 188MM - RYGP8700004



TABLE FORK 210MM - RYGP8700002



TABLE KNIFE 240MM - RYGP8700001



SIDE KNIFE 212MM - RYGP8700005



SOUP SPOON 210MM - RYGP8700003



DESSERT SPOON 188MM - RYGP8700006



ENGLISH TEA SPOON 132MM - RYGP8700007



SERVING SPOON 248MM - RYGP870009



SERVING FORK 248MM - RYGP870011



COFFEE SPOON 116MM - RYGP870013



ESPRESSO SPOON 106MM - RYGP870014



BUTTER KNIFE 172MM - RYGP870019



BOUILLON SPOON 188MM - RYGP870034



SMALL BOWL DESSERT SPOON 188MM - RYGP870018



FISH FORK 188MM - RYGP870023



FISH KNIFE 225MM - RYGP870022



PASTRY FORK 160MM - RYGP870055



SUGAR TONGS 132MM - RYGP/M870070



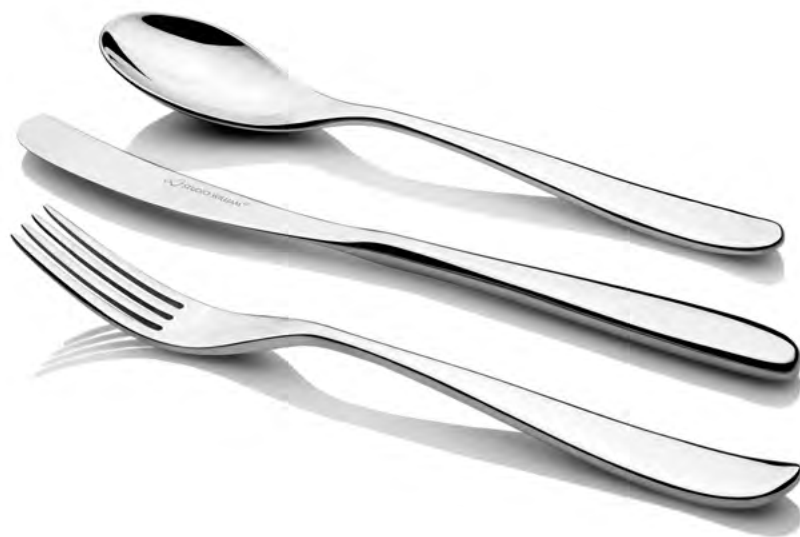
OLIVE MIRROR

Mirror Finish & Heavy Weight

Using beautiful refined asymmetric lines Olive challenges the appearance of traditional cutlery and brings personality to the dining table. The design was inspired by the gnarly nature of the tress forming around their environment. Olive won the prestigious Reddot Award and has been placed in the permanent collection at the Design Museum in Essen, Germany.



red**dot** design award



SIDE FORK 188MM - OLM8800004



TABLE FORK 210MM - OLM8800002



TABLE KNIFE 240MM - OLM8800001



SIDE KNIFE 212MM - OLM8800005



SOUP SPOON 210MM - OLM8800003



DESSERT SPOON 188MM - OLM8800006



ENGLISH TEA SPOON 132MM - OLM8800007



FISH FORK 188MM - OLM880023



FISH KNIFE 225MM - OLM880022



TAPAS / APPETIZER FORK 150MM - OLM880026



BUTTER KNIFE 172MM - OLM880019



TAPAS / APPETIZER SPOON 150MM - OLM880027



TASTER SPORK 188MM - OLM880046



MINI TASTER SPOON 150MM - OLM880038



SEAFOOD FORK 175MM - OLM880045



BOUILLON SPOON 188MM - OLM880034



PASTRY FORK 160MM - OLM880055



SERVING SPOON 248MM - OLM880009



SERVING FORK 248MM - OLM880011



COFFEE SPOON 116MM - OLM880013



ESPRESSO SPOON 106MM - OLM880014



SMALL BOWL DESSERT SPOON 188MM - OLM880018



STEAK KNIFE 245MM - OLM880015



CHEESE KNIFE 223MM - OLM880020



WATCH OLIVE MIRROR VIDEO



OLIVE SATIN

Satin Finish & Heavy Weight

Using beautiful refined asymmetric lines Olive challenges the appearance of traditional cutlery and brings personality to the dining table. The design was inspired by the gnarly nature of the tress forming around their environment. Olive won the prestigious Reddot Award and has been placed in the permanent collection at the Design Museum in Essen, Germany.



red**dot** design award



SIDE FORK 188MM - OLS8800004



TABLE FORK 210MM - OLS8800002



TABLE KNIFE 240MM - OLS8800001



SIDE KNIFE 212MM - OLS8800005



SOUP SPOON 210MM - OLS8800003



DESSERT SPOON 188MM - OLS8800006



ENGLISH TEA SPOON 132MM - OLS8800007



FISH FORK 188MM - OLS880023



FISH KNIFE 225MM - OLS880022



COFFEE SPOON 116MM - OLS880013



ESPRESSO SPOON 106MM - OLS880014



APPETIZER SPOON 106MM - OLS880027



APPETIZER SPOON 106MM - OLS880026



SERVING SPOON 248MM - OLS880009



SERVING FORK 248MM - OLS880011



STEAK KNIFE 245MM - OLS880015



BUTTER KNIFE 172MM - OLS880019



SMALL BOWL DESSERT SPOON 188MM - OLS880018



BOUILLON SPOON 188MM - OLS880034

WATCH OLIVE SATIN VIDEO



MAHOGANY SATIN

Satin Finish & Heavy Weight

The fruit of the Mahogany tree is the inspiration for Mahogany cutlery. The shape of the fruit was imagined to be pressed into metal to create a spoon bowl. The strong Mahogany trunks, inspired the slender to thick tapered handles. Mahogany cutlery has been designed to highlight the functional area of a utilitarian object by making a feature of the manufacturing processes that go into creating cutlery.

The edges of the handles are finished with crafted radii to ensure a delicate ergonomic feeling to the hand, whilst the varying thickness gauges in the handles have been engineered for refined weight and balance.



product
design award



reddot design award



THE CHICAGO
ATHENAEUM
MUSEUM OF
ARCHITECTURE
AND DESIGN



SIDE FORK 188MM - MHS8800004



TABLE FORK 210MM - MHS8800002



TABLE KNIFE 240MM - MHS8800001



SIDE KNIFE 212MM - MHS8800005



SOUP SPOON 205MM - MHS8800003



DESSERT SPOON 188MM - MHS8800006



ENGLISH TEA SPOON 132MM - MHS8800007



SERVING SPOON 248MM - MHS880009



SERVING FORK - 248MM MHS880011



COFFEE SPOON 116MM - MHS880013



ESPRESSO SPOON 106MM - MHS880014



STEAK KNIFE 245MM - MHS880015



BUTTER KNIFE 172MM - MHS880019



SMALL BOWL DESSERT SPOON 188MM - MHS880018



FISH FORK 188MM - MHS880023



FISH KNIFE 225MM - MHS880022



BOUILLON SPOON 188MM - MHS880034



PASTRY FORK 160MM - MHS880055

WATCH MAHOGANY VIDEO



TILIA MIRROR

Mirror Finish & Medium Weight

The simplicity of Tilia's clean flowing form makes this a very elegant and sophisticated pattern. Long and elegant, our Tilia range is unique, like the family of trees itself. The exact number of species of Tilia is subject to considerable debate, as many, or most, of the species will hybridise readily, both in the wild and in cultivation.



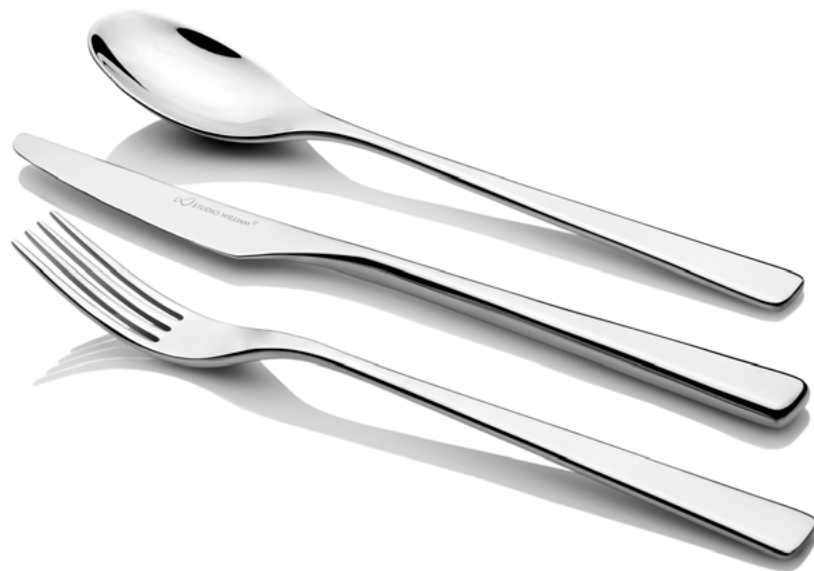
THE CHICAGO
ATHENAEUM
MUSEUM OF
ARCHITECTURE
AND DESIGN



GERMAN
DESIGN
AWARD
WINNER



product
design award



SIDE FORK 192MM - TLM8800004



TABLE FORK 215MM - TLM8800002



TABLE KNIFE 240MM - TLM8800001



SIDE KNIFE 214MM - TLM8800005



SOUP SPOON 215MM - TLM8800003



DESSERT SPOON 192MM - TLM8800006



ENGLISH TEA SPOON 135MM - TLM8800007



SERVING SPOON 248MM - TLM880009



SERVING FORK 248MM - TLM880011



COFFEE SPOON 116MM - TLM880013



ESPRESSO SPOON 106MM - TLM880014



STEAK KNIFE 245MM - TLM880015



BUTTER KNIFE 172MM - TLM880019



PASTRY FORK 160MM - TLM880055



SMALL BOWL DESSERT SPOON 188MM - TLM880018



FISH FORK 192MM - TLM880023



FISH KNIFE 225MM - TLM880022



BOUILLON SPOON 188MM - TLM880034

WATCH TILIA MIRROR VIDEO



TILIA SATIN

Satin Finish & Medium Weight

The simplicity of Tilia's clean flowing form makes this a very elegant and sophisticated pattern. Long and elegant, our Tilia range is unique, like the family of trees itself. The exact number of species of Tilia is subject to considerable debate, as many, or most, of the species will hybridise readily, both in the wild and in cultivation.



THE CHICAGO
ATHENAEUM
MUSEUM OF
ARCHITECTURE
AND DESIGN



GERMAN
DESIGN
AWARD
WINNER



product
design award



SIDE FORK 192MM - TLS8800004



TABLE FORK 215MM - TLS8800002



TABLE KNIFE 240MM - TLS8800001



SIDE KNIFE 214MM - TLS8800005



SOUP SPOON 215MM - TLS8800003



DESSERT SPOON 192MM - TLS8800006



ENGLISH TEA SPOON 135MM - TLS8800007



SERVING SPOON 248MM - TLS880009



SERVING FORK 248MM - LS880011



COFFEE SPOON 116MM - TLS880013



ESPRESSO SPOON 106MM - TLS880014



STEAK KNIFE 245MM - TLS880015



BUTTER KNIFE 172MM - TLS880019



BOUILLON SPOON 188MM - TLS880034



SMALL BOWL DESSERT SPOON 188MM - TLS880018



FISH FORK 192MM - TLS880023



FISH KNIFE 225MM - TLS880022

WATCH TILIA SATIN VIDEO



TILIA CRACKLE

Mirror Finish & Medium Weight

The newest addition to this range adds a textured and tactile element to the otherwise minimal design. Tilia Crackle features a crackle inspired texture debossed into the front and back of each handle, blending seamlessly into each utensil head. Tilia Crackle decoration is inspired by the crackled glazing applied on to dinnerware, where, during the kiln firing process, the glaze cracks and makes a beautiful irregular optical effect. Available in mirror polished finish only.



SIDE FORK 192MM - TLCKM 8800004

TABLE FORK 215MM - TLCKM 8800002

TABLE KNIFE 240MM - TLCKM 8800001

SIDE KNIFE 214MM - TLCKM 8800005

SOUP SPOON 215MM - TLCKM 8800003

DESSERT SPOON 192MM - TLCKM 8800006

ENGLISH TEA SPOON 135MM - TLCKM 8800007



BOUILLON SPOON 188MM - TLCKM 880034



BUTTER KNIFE 172MM - TLCKM 880019



COFFEE SPOON 116MM - TLCKM 880013



ESPRESSO SPOON 106MM - TLCKM 880014



STEAK KNIFE 240MM - TLCKM 880015



PASTRY FORK 160MM - TLCKM 880055



SMALL BOWL DESSERT SPOON 188MM - TLCKM 880018

WATCH TILIA CRACKLE VIDEO



BALSA MIRROR

Mirror Finish & Medium Weight

Balsa features unique and dynamic details, that compliment and enhance your dining experience. Balsa is a very popular material to use when model making and the very first models of Balsa were made using this versatile wood. Deliberately elongated and slender looking fork heads and spoon bowls enable the diner to pick up smaller food portion sizes, this allows the diner to really think about the tastes and textures the chef has created.



THE CHICAGO
ATHENAEUM
MUSEUM OF
ARCHITECTURE
AND DESIGN



GERMAN
DESIGN
AWARD
WINNER



reddot design award



SIDE FORK 188MM - BLM8800004



TABLE FORK 210MM - BLM8800002



TABLE KNIFE 240MM - BLM8800001



SIDE KNIFE 212MM - BLM8800005



SOUP SPOON 210MM - BLM8800003



DESSERT SPOON 188MM - BLM8800006



ENGLISH TEA SPOON 132MM - BLM8800007



COFFEE SPOON 116MM - BLM880013



ESPRESSO SPOON 106MM - BLM880014



STEAK KNIFE 245MM - BLM880015



SMALL BOWL DESSERT SPOON 188MM - BLM880018



BOUILLON SOUP SPOON 188MM - BLM880034



BUTTER KNIFE 172MM - BLM880019



SERVING SPOON 248MM - BLM880009



SERVING FORK - 248MM BLM880012

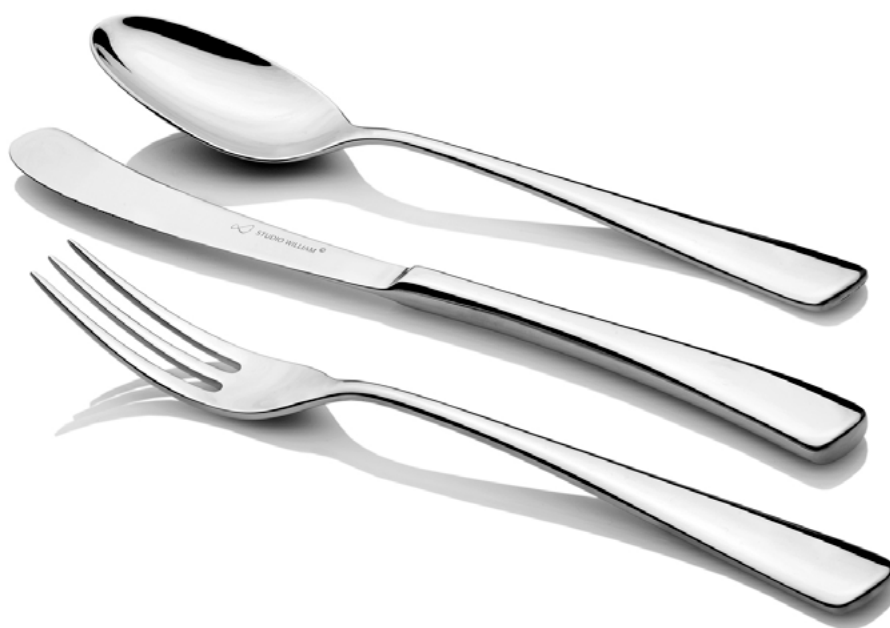
WATCH BALSA VIDEO



LARCH MIRROR

Mirror Finish & Medium Weight

Design concept: historical modern. Looking back to the middle 1700's when deer antlers were used as handles for cutlery. William designed Larch to be a modern curvaceous interpretation of this era. The curved 1700's knife blade and three pronged fork heads, re-designed to perform to modern expectations of today's performance needs. A great range for historical/grand properties, character interior designed restaurants. Also recommended for banqueting.





SERVING SPOON 248MM - LAM8800009



SERVING FORK 248MM - LAM8800011



COFFEE SPOON 116MM - LAM8800013



ESPRESSO SPOON 106MM - LAM8800014



STEAK KNIFE 245MM - LAM8800015



BUTTER KNIFE 172MM - LAM8800019



SMALL BOWL DESSERT SPOON 188MM - LAM8800018



FISH FORK 188MM - LAM8800023



FISH KNIFE 225MM - LAM8800022



CHEESE KNIFE 212MM - LAM8800020



BOUILLON SPOON 188MM - LAM8800034



LONG MOCHA SPOON 225MM - LAM8800036



PASTRY FORK 160MM - LAM8800055



HORN HANDLED STEAK KNIFE 240MM - LASMB8800035



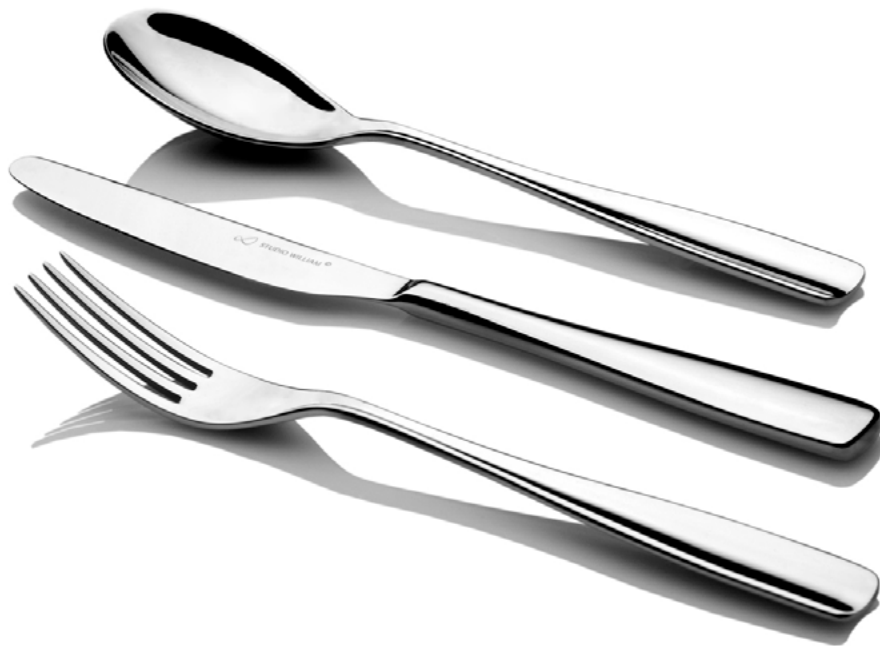
WATCH LARCH VIDEO



REDWOOD MIRROR

Mirror Finish & Medium Weight

Inspired by classic cutlery styling. The Redwood design concept carries the spirit of the violin “fiddle” shaped handle into a new clean uncluttered look, with curved-shaped handles on forks and spoons. This pattern’s aesthetics suits both contemporary and traditional settings, in particular ADD and banqueting.



SIDE FORK 188MM – REM8800004



TABLE FORK 210MM – REM8800002



TABLE KNIFE 235MM – REM8800001



SIDE KNIFE 212MM – REM8800005



SOUP SPOON 210MM – REM8800003



DESSERT SPOON 188MM – REM8800006



ENGLISH TEA SPOON 132MM – REM8800007



SERVING SPOON 248MM - REM880009



SERVING FORK 248MM - REM880011



COFFEE SPOON 116MM - REM880013



ESPRESSO SPOON 106MM - REM880014



STEAK KNIFE 245MM - REM880015



BUTTER KNIFE 172MM - REM880019



FISH FORK 188MM - REM880023



FISH KNIFE 225MM - REM880022



BOUILLON SPOON 188MM - REM880034

WATCH REDWOOD VIDEO



LARCH SILVERPLATE

Mirror Finish & Medium Weight

Larch cutlery has historical influences but it's flowing form gives this pattern a modern flavour. Made using a slightly heavier gauge of the finest quality 18/10 Stainless Steel for the forks and spoons than our normal Larch cutlery (available in mirror finish), the cutlery is finished in a beautiful 25 micron electro plated Nickel Silverplate for the best possible longevity. Please note that any Silverplate should be hand washed only.





SERVING SPOON 248MM - LASP880009



SERVING FORK 248MM - LASP880011



COFFEE SPOON 116MM - LASP880013



ESPRESSO SPOON 106MM - LASP880014



STEAK KNIFE 245MM - LASP880015



BUTTER KNIFE 172MM - LASP880019



SMALL BOWL DESSERT SPOON 188MM - LASP880018



FISH FORK 188MM - LASP880023



FISH KNIFE 225MM - LASP880022



CHEESE KNIFE 212MM - LASP880020



BOUILLON SPOON 188MM - LASP880034



LONG MOCHA SPOON 225MM - LASP880036



PASTRY FORK 160MM - LASP880055



MULBERRY SILVERPLATE

Mirror Finish & Medium Weight

The Mulberry tree is generally a short-lived tree with a lifespan similar to that of humans, however there are some known to be over 250 years old. Made using a slightly heavier gauge of the finest quality 18/10 Stainless Steel for the forks and spoons than our normal Mulberry cutlery (available in mirror finish), the cutlery is finished in a beautiful 25 micron electro plated Nickel Silverplate for the best possible longevity. Please note that any Silverplate should be hand washed only.



SIDE FORK 188MM - MUSP8800004

TABLE FORK 210MM - MUSP8800002

TABLE KNIFE 240MM - MUSP8800001

SIDE KNIFE 212MM - MUSP8800005

SOUP SPOON 210MM - MUSP8800003

DESSERT SPOON 188MM - MUSP8800006

ENGLISH TEA SPOON 132MM - MUSP8800007



SERVING SPOON 248MM - MUSP8800009



SERVING FORK 248MM - MUSP8800011



COFFEE SPOON 116MM - MUSP8800013



ESPRESSO SPOON 106MM - MUSP8800014



STEAK KNIFE 245MM - MUSP8800015



PIE SERVER 248MM - MUSP8800016



FRENCH SAUCE SPOON 188MM - MUSP8800029



CHOP STICKS 240MM - MUSP8800031



SMALL BOUILLON SPOON 188MM - MUSP8800034



LONG MOCHA SPOON 220MM - MUSP8800036



BUFFET SPORK 185MM - MUSP8800048



LOBSTER PICK 200MM - MUSP8800050



PASTRY FORK 160MM - MUSP8800055





BUTTER KNIFE 172MM - MUSP8800019



CHEESE KNIFE 216MM - MUSP8800020



FISH FORK 188MM - MUSP8800023



FISH KNIFE 225MM - MUSP8800022



SAUCE LADLE 174MM - MUSP8800017



LARGE SOUP LADLE 300MM - MUSP8800030



ICE CREAM SPOON 160MM - MUSP8800064



SMALL BOWL DESSERT SPOON 188MM - MUM8800018



TEXTURED SPOON DROPLET 188MM - MUSP8800059



TEXTURED SPOON RAIN DROPS 188MM - MUSP8800060



TEXTURED SPOON SWIRL 188MM - MUSP8800061



TEXTURED SPOON RIPPLE 188MM - MUSP8800062

SILVERPLATE SERVICE

We can Silverplate almost any piece of cutlery we produce. The cutlery is finished in a beautiful 25 micron electro plated Nickel Silverplate for the best possible longevity.

MADE
TO
ORDER

The ranges that we recommend for Silverplating:

Larch
Olive
Royal Oak Mirror
Mulberry

We offer a second to none after care service, for making sure your silverplate stands the test of time. Bespoke options available through our team.



PVD TITANIUM COATING

Incorporating coloured cutlery has become a defining element of modern table styling. Cutlery preferences have shifted towards bold pieces that make dining an experience rather than just a meal. Studio William has been at the forefront of this movement by offering our customers PVD titanium colours in any of our patterns in both mirror or satin finishes. Bespoke options available through our team.

MADE
TO
ORDER





TOONA CHOPSTICKS

Toona Chinese Chopsticks available in a selection of colours each having a textured area at the tip of the chopstick for added food grip. Made in premium SPS Melamine and an 18/10 brushed Satin Stainless Steel cap with red insert detail for finishing touch.



TOONA CHOPSTICKS BLACK 10.6" - TON880084



TOONA CHOPSTICKS IVORY 10.6" - TON880085



TOONA CHOPSTICKS CRIMSON 10.6" - TON880086



TOONA CHOPSTICKS BLACK WITH GOLD 10.6" - TON880087



TOONA CHOPSTICKS JADE WITH GOLD 10.6" - TON880088



TOONA CHOPSTICKS MIDNIGHT WITH GOLD 10.6" - TON880092



TOONA CHOPSTICKS WHITE WITH GOLD 10.6" - TON880093



TOONA CHOPSTICKS BLACK WITH BLACK 10.6" - TON880090



TOONA CHOPSTICKS CRIMSON WITH GOLD 10.6" - TON880091



JAPANESE CHOPSTICKS

Japanese chopsticks frequently are square in the handle, and the tips are more pointy and thinner in size. They are beautifully balanced, light, so as to be very agile in the hand. The characteristics of the simple classic style with tiny logo detail at the end, allow for a character and premium design detail.

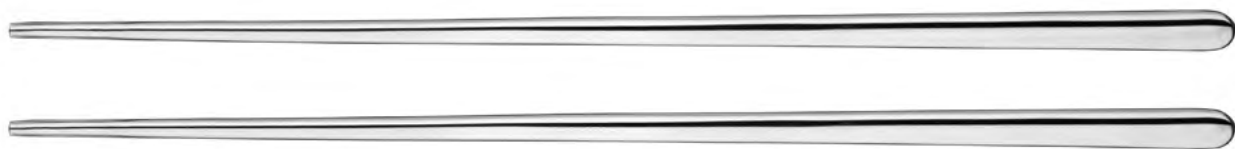


JAPANESE CHOPSTICK BLACK 9.8" - JPN 880091



KOREAN CHOPSTICKS

The Mulberry Mirror Chopsticks are Korean style chopsticks, with a flatter shape and pressed textured area at the tip of the chopstick for added food grip. These are made from 18/10 stainless steel in a mirror finish to compliment any mirror cutlery place setting.



MULBERRY MIRROR KOREAN CHOPSTICKS 9.8" - MUM880031

OUR SUSTAINABLE COMMITMENT

Our mission is simple- to design and make beautiful and elegant cutlery made to last generations. That makes Studio William inherently sustainable as after our cutlery has been cherished over generations it can easily be recycled. This is only possible by using high quality solid 18/10 stainless steel and master tooling craftspeople who refine the nuances of each edge, curve and contour. We are proudly part of Ecovadis who provide a definitive benchmark for ethical and environmental standards across many industries. The commitment to fully sustainable packaging using natural materials goes across our whole business. In 2022, we made the change to plain card inner cartons, biodegradable poly bags and paper tape for all new factory orders.



WORKING WITH US

CUSTOMER SERVICE

We're cutlery obsessives and possibly described as geeky, it is simple... **we love what we do.** Our thoughtful customer service is so much more than transactions **it is** the most important part of the work we do.

5 YEAR WARRANTY

We offer a 5 year Food service Manufacturer's Warranty on all of our Stainless Steel products.

UK WAREHOUSE

All of our ranges are stocked in the UK so we can turn your order around very quickly.

CONTACT US

If you have any queries or just need to contact us
then please feel free as we're more than happy to help.

Sabrina Sandha | Head of Sales
sabrina.sandha@studiowilliam.com

+44 (0)1386 800 000
studiowilliam.com

Studio William Welch Ltd
Unit C1
The Bridge Business Centre
Timothy's Bridge Road
Stratford-Upon-Avon
Warwickshire
CV37 9HW
United Kingdom



**FOLLOW US FOR THE
LATEST UPDATES**



@studiowilliam